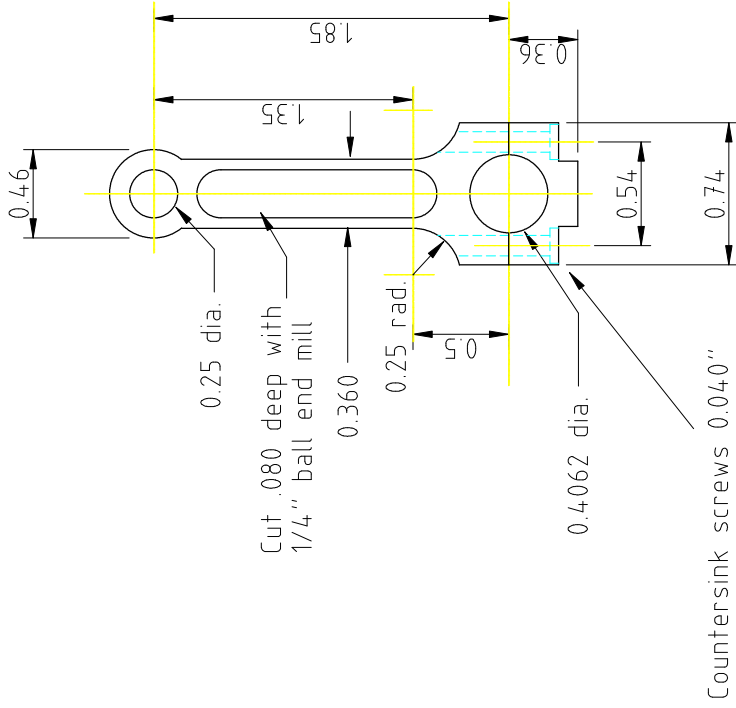
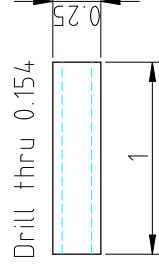


Directions for making the Rod

- 1 - Cut a blank 0.75" wide by 3 inches long from 0.25" thick plate.
- 2 - Drill 2 holes in the end for the cap screws (#43 drill)
- 3 - Cut the cap off from the rod.
- 4 - Mill the ends of the rod and cap FLAT and SQUARE.
- 5 - Tap threads in the rod
- 6 - Drill the Cap for screw clearance (#32)
- 7 - Attach Cap to Rod with 2 4-40 SHCS (socket head cap screws)
- 8 - Drill the hole for the big end
- 9 - Drill the hole for the small end.
- 10 - Use a 1/2" end mill and cut the radius on each side.
- 11 - Use an end mill and cut the sides.
- 12 - Use a 1/4" ball end mill and cut the groove in the middle.
Flip and do other side.
- 13 - Use rotary table to round the small end.



Make a split bearing to fit rod and crankshaft.



Wrist Pin

All dimensions are inches unless specified.

Date : 18-Jan-2010

Project BECO 2.0

Drawn by: Glen Bond

Drawing Connecting Rod